

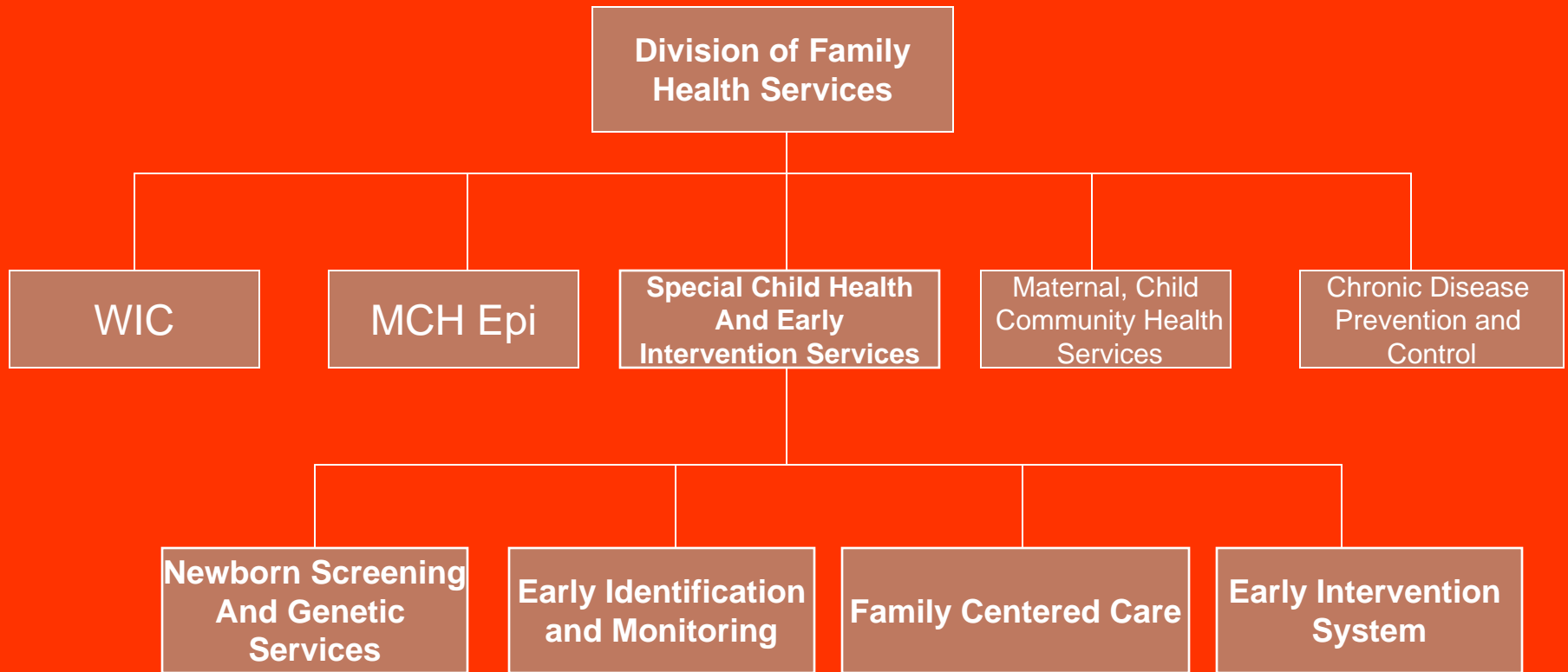
Access to Health Services...Help for New Jersey Families with Children with Special Health Care Needs

Bonnie Teman, RN, MSN

**New Jersey Department of Health and Senior Services,
Special Child Health and Early Intervention Services**

www.state.nj.us/health/fhs/

Special Child Health and Early Intervention Services



Special Child Health and Early Intervention Services



Mission: To assure that all children with special health needs have access to comprehensive, community based, culturally competent, and family centered care.

Special Child Health and Early Intervention Services

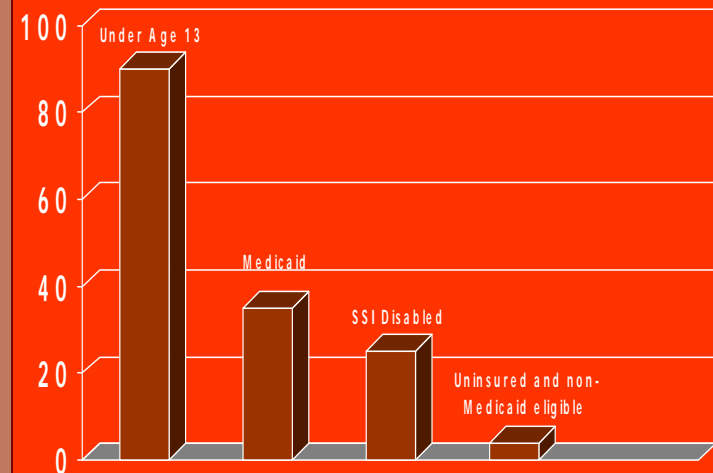
Family Centered Care Services

MISSION

Assist children age birth to 21 years to access comprehensive family centered culturally competent care, and serve as a point of entry for Early Intervention System.

- Case Management
- Child Evaluation Centers/
Tertiary and Cleft Lip/ Palate
Services
- Ryan White Part D

Client Statistics



CLIENT STATISTICS:

90% are under age 13 years

37% Medicaid

26% SSI Disabled

3% Uninsured and non-Medicaid
eligible

SCHS Case Management

Focus – Children with special needs, age birth to age 21 years

- Primary care provider and/or other health and social service providers contacted to coordinate services
- Referrals made for identified needs
- Individual Service Plans developed
- Help families to advocate through various agencies

Programs, Services, and Supports

Information and referral to State, Federal, and charitable programs, examples include

- Early Intervention Services
- Child Evaluation Centers
- Family Centered HIV Care Network
- Catastrophic Illness in Children Relief Fund program
- NJ FamilyCare
- Division of Developmental Disabilities
- Division of Medical Assistance and Health Services
Medicaid and/or Waiver programs
- Social Security
- SPAN, Elks, Lions, etc....

Something New:

➤ Grace's Law:

This law requires certain health insurers to cover a portion of the cost of hearing aids and medically necessary expenses incurred in the purchase of a hearing aid for covered children 15 years of age or younger.

For More Information

- New Jersey Department of Health and Senior Services, Special Child Health and Early Intervention Services, 609-777-7778, **www.state.nj.us/health/fhs/**
- New Jersey Department of Human Services, Division of Medical Assistance and Health Services, 609-292-4800, and/or Catastrophic Illness in Children Relief Fund, 1-800-335-FUND, **<http://www.state.nj.us/humanservices/>**