



Access to Health Services...Help for New Jersey Families with Children with Special Health Care Needs

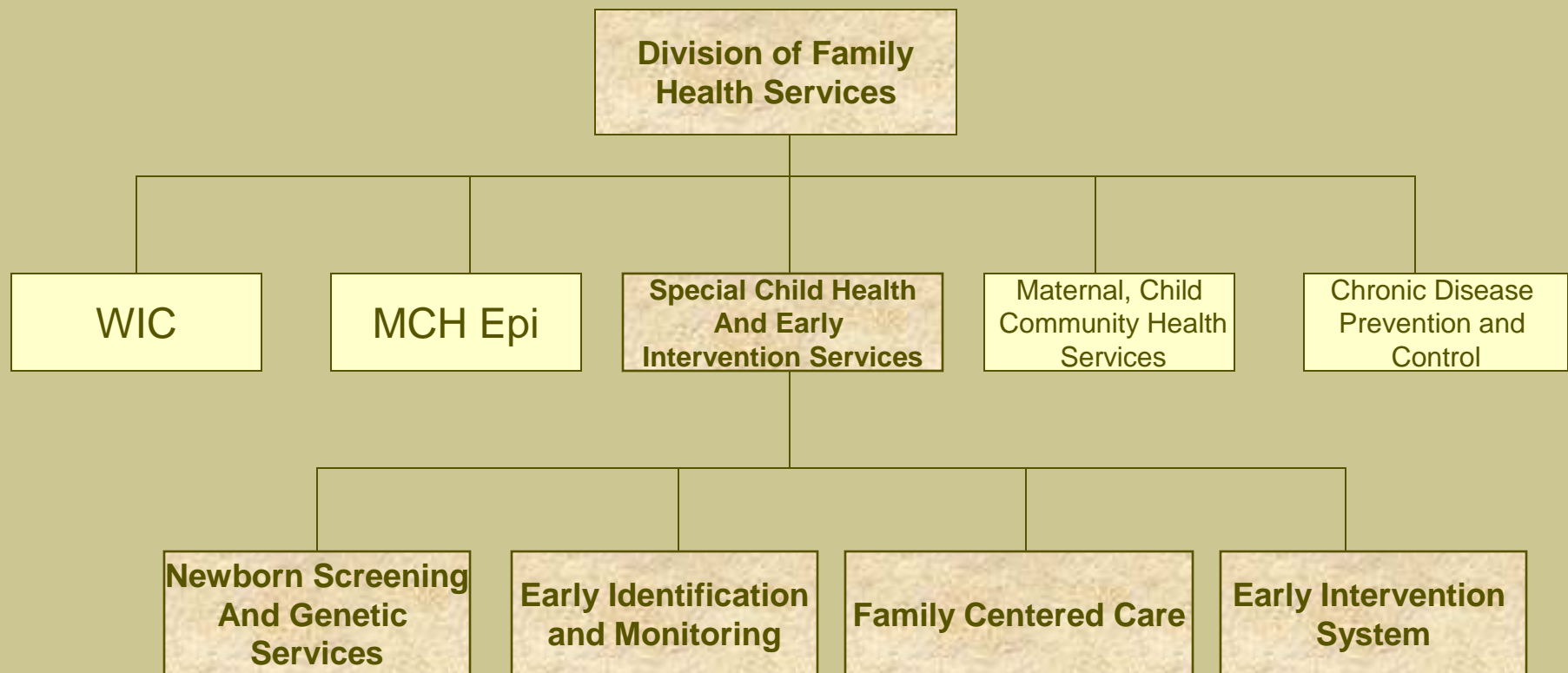
Bonnie Teman, RN, MSN

Pauline Lisciotto, RN, MSN

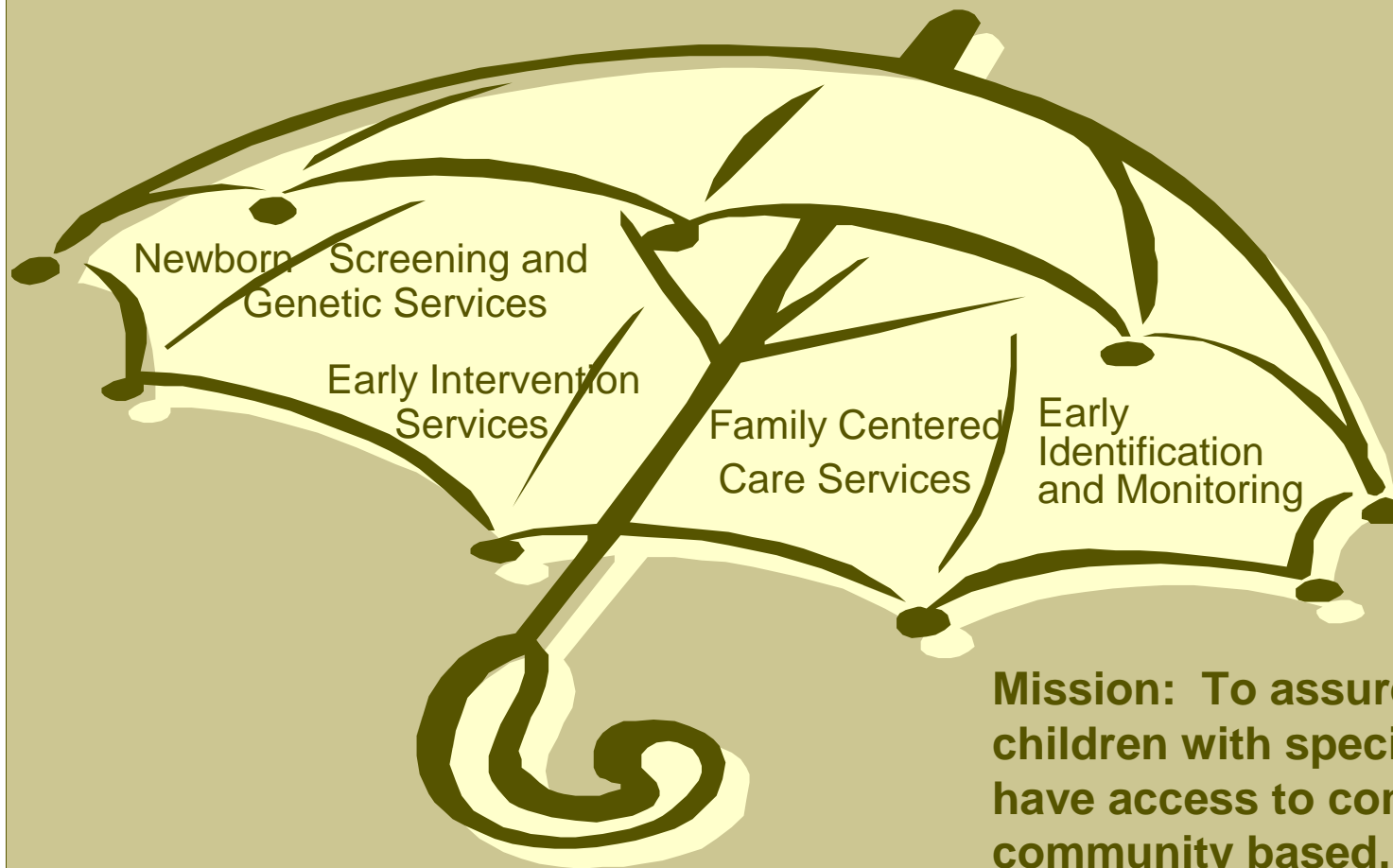
**New Jersey Department of Health and Senior Services,
Special Child Health and Early Intervention Services**

www.state.nj.us/health/fhs/

Special Child Health and Early Intervention Services



Special Child Health and Early Intervention Services



Mission: To assure that all children with special health needs have access to comprehensive, community based, culturally competent, and family centered care.

Special Child Health and Early Intervention Services



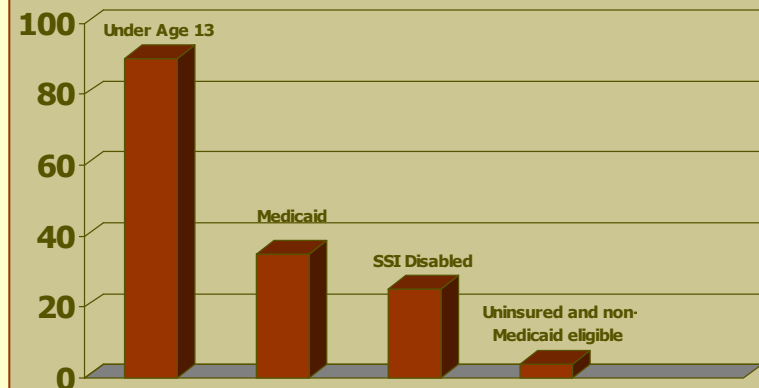
Family Centered Care Services

MISSION

Assist children age birth to 21 years to access comprehensive family centered culturally competent care, and serve as a point of entry for Early Intervention System.

- Case Management
- Child Evaluation Centers/
Tertiary and Cleft Lip/Palate Services
- Ryan White Part D

Client Statistics



CLIENT STATISTICS:

90% are under age 13 years

35% Medicaid

25% SSI Disabled

4% Uninsured and non-Medicaid eligible

Case Management



Focus: Assist children with special needs, age birth to age 21 years to access community based services

21 county based Special Child Health Services Case Management Units

Jointly supported by County Boards of Chosen Freeholders and the NJ Department of Health and Senior Services

Staffed by nurses and social workers

How Can Case Management Help?



Follow-up on children referred through NJ Birth Defects Registry, SSI, Catastrophic Illness in Children Relief Fund Program, community based and self referrals to provide information, referrals and/or ongoing case management services

Contact primary care provider and/or other health and social service providers to help coordinate services

Referrals made for identified needs to state, federal and/or local resources

Develop Individual Service Plans

Advocate for families through various agencies

Case Management Project Family WRAP



In collaboration with the Statewide Parent Advocacy Network (SPAN):

Family WRAP provides one-stop, “wrap-around” services, information, resources and support to families of children with disabilities, developmental delays and special health care needs. Family WRAP combines three SPAN programs: Family Resource Specialists/Project CARE, Parent to Parent and Family Voices.

Transition to adulthood resources

Resources:



Information and referral to state, federal, and local programs, examples include

- Family Centered HIV Care Network
- Child Evaluation Centers
- Early Intervention Services
- Catastrophic Illness in Children Relief Fund program
- NJ FamilyCare
- Division of Developmental Disabilities
- Division of Disability Services
- Division of Medical Assistance and Health Services
Medicaid and/or Waiver programs
- Social Security
- SPAN, Elks, Lions, etc....

Special Child Health Services Case Management



Contact Information:

Bonnie Teman, Coordinator

609-777-7778

bonnie.teman@doh.state.nj.us

Web site:

<http://www.state.nj.us/health/fhs/sch/sccase.shtml>

Family Centered Care Services - Ryan White Part D



Ryan White Part D - Background:

- The NJ Ryan White Part D program has been funded by Health Resources Services Administration since 1988
- Seven sites serve all 21 counties in NJ
 - Locations include Camden, Neptune, New Brunswick, Jersey City, Paterson, and 2 in Newark
 - Satellite sites include Somers Point, Burlington, Trenton, and Salem
- In 2007, the Network served over 3,500 clients
- The client demographics include 69% African American, 22% Hispanic, and 10% Caucasian
- The annual perinatal transmission rate in NJ has declined from 75 infections in 1993 to 2 infections in 2006
- Since its inception, the Network has noticed a shift in the population served, including a declining infant and youth population and a growing adolescent population

Family Centered Care Services Continued



Ryan White Part D – What We Do:

- Enhance service delivery to women, infants, youth and families
- Provide comprehensive, family-centered medical care and social service support
- Target youth and pregnant women for testing and treatment
- Facilitate access to research
- Maintain consumer involvement
- Reduce the perinatal transmission of HIV
- Identify new behaviorally-infected adolescents
- Support rapid HIV testing
- Implement NJ's new legislation and move towards "opt out" testing of all pregnant women, and testing of newborns when the serostatus of the mother is unknown.
- Evaluate the effectiveness of the Network services

NJ Ryan White Part D Program



Contact Information:

Project Director, Jane Caruso

609-777-7748

jane.caruso@doh.state.nj.us

Web site:

<http://www.state.nj.us/health/fhs/hivcare/index.shtml>

Specialized Pediatric Services



Child Evaluation Centers/Tertiary & Cleft Lip/Palate Services

Tertiary Centers – 3 and
Cleft Lip/Palate Centers – 5

Programs are housed in regional medical centers and provide comprehensive pediatric specialty services to children with birth defects, chronic diseases, handicapping conditions or at risk for handicapping conditions

12,500 children served in 2007

Specialized Pediatric Services



Child Evaluation Centers/Tertiary & Cleft Lip/Palate Craniofacial Services

Child Evaluation Centers – 11

FAS Diagnostic Centers – 6

Regional medical centers that provide statewide multi-disciplinary outpatient evaluation of children with developmental, learning, behavioral, communication and sensory disorders

Services include diagnosis and/or development of plans for comprehensive care for children with medical, developmental and behavioral disorders

10,700 children served in 2007

Specialized Pediatric Services Program



Contact Information:

Elizabeth Collins, Coordinator

609-777-7778

elizabeth.collins@doh.state.nj.us

Web sites:

<http://www.state.nj.us/health/fhs/sch/cec.shtml>

<http://www.state.nj.us/health/fhs/sch/sccleft.shtml>

<http://www.state.nj.us/health/fhs/sch/scpats.shtml>

Early Intervention Services



Early Intervention

**is a system of services and supports for families
and their children age birth to age three
who have developmental delays and disabilities**

How to make a Referral to the New Jersey EIS



- **NJEIS has developed a regional system point of entry (SPOE) by calling 1-888-653-4463**
- **SPOE referral info at www.nj.gov/health/fhs/eis**
- **Referrals can be made by a parent/guardian or other referral source (with parental consent)**
- **A parent must give consent for evaluation to determine eligibility and, if eligible, provision of early intervention services**

EIS State
Office



Contact Information:

Terry Harrison, Part C
Coordinator

609-777-7734

terry.harrison@doh.state.nj.us

Web site: www.nj.gov/health/fhs/eis

Autism Initiatives



The Department

- proposes to add the reporting of severe neonatal jaundice and the Autism Spectrum Disorders into the existing Birth Defects Registry
- hired 2 new staff devoted to the Autism Registry
- is developing the rules and regulations to administer the Registry
- is developing the Autism Registry data collection form

Autism Initiatives

continued



- **Governor's Council for Medical Research and Treatment of Autism is housed within Special Child Health and Early Intervention Services under Executive Director Michael Gallo, PhD.**
- **14 members including clinical and scientific experts, parents, autism organization representatives and other stakeholders.**
- **The Council has established a \$6 million Clinical Enhancement grant program designed to improve families' access to services**
- **A Council Website is currently under development.**
- **For More Information contact Marilyn Gorney-Daley, DO, MPH, Medical Director; Michael Gallo, PhD, Executive Director at 609-984-0755.**

Catastrophic Illness in Children Relief Fund



MISSION

- Assist all NJ families cope with uncovered medical expenses for their children.
- Eligibility requirements:
 1. Child was 21 years of age or younger when expenses were incurred.
 2. Uncovered expenses incurred exceeded 10% of family's annual income, plus 15% of any excess income over \$100,000.
 3. Child's parents or legal guardian have been residents of NJ for at least three months prior to submitting an application.



www.njcatastrophicfund.org
800-335-FUND (3863)

For More Information



New Jersey Department of Health and
Senior Services, Special Child Health and
Early Intervention Services, 609-777-7778,
www.state.nj.us/health/fhs/