

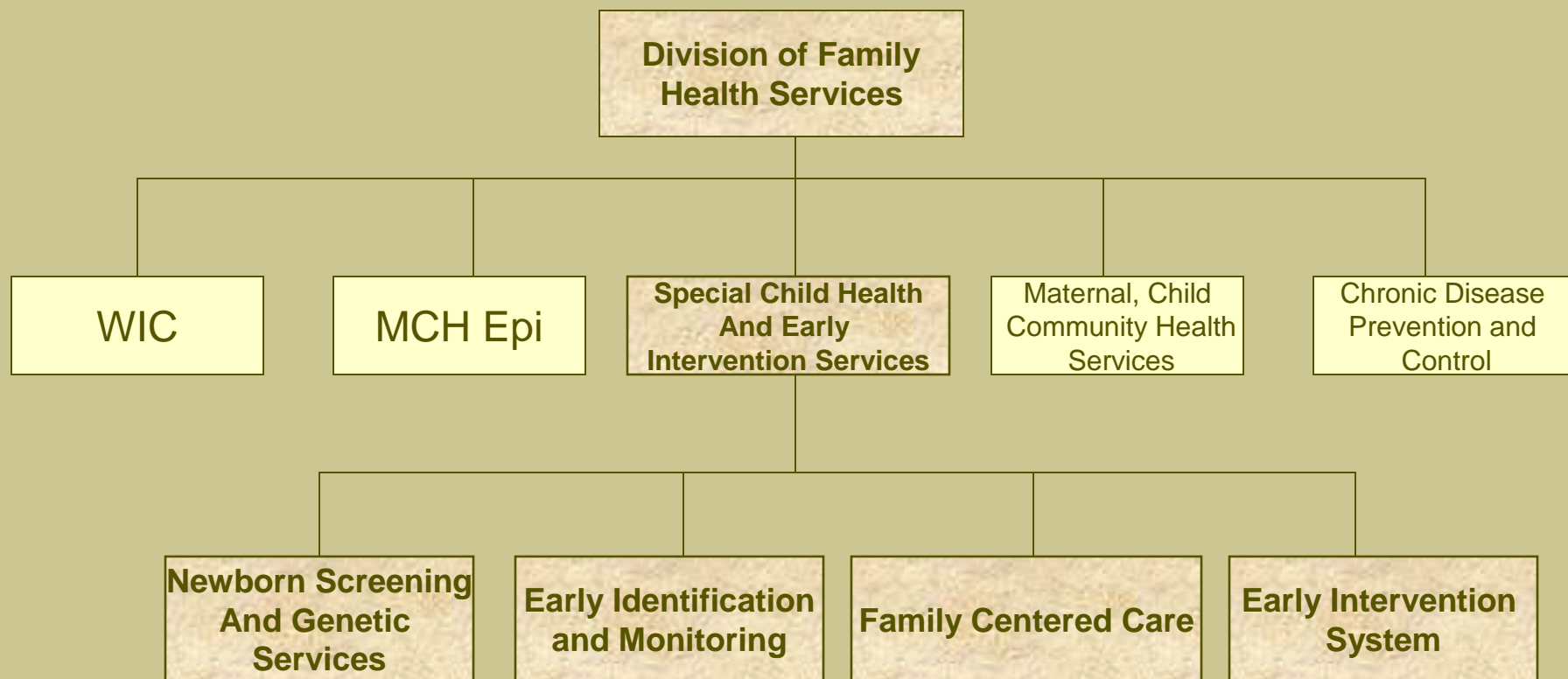
Access to Health Services...Help for New Jersey Families with Children with Special Health Care Needs

**Bonnie Teman, RN, MSN
Pauline Lisciotto, RN, MSN**

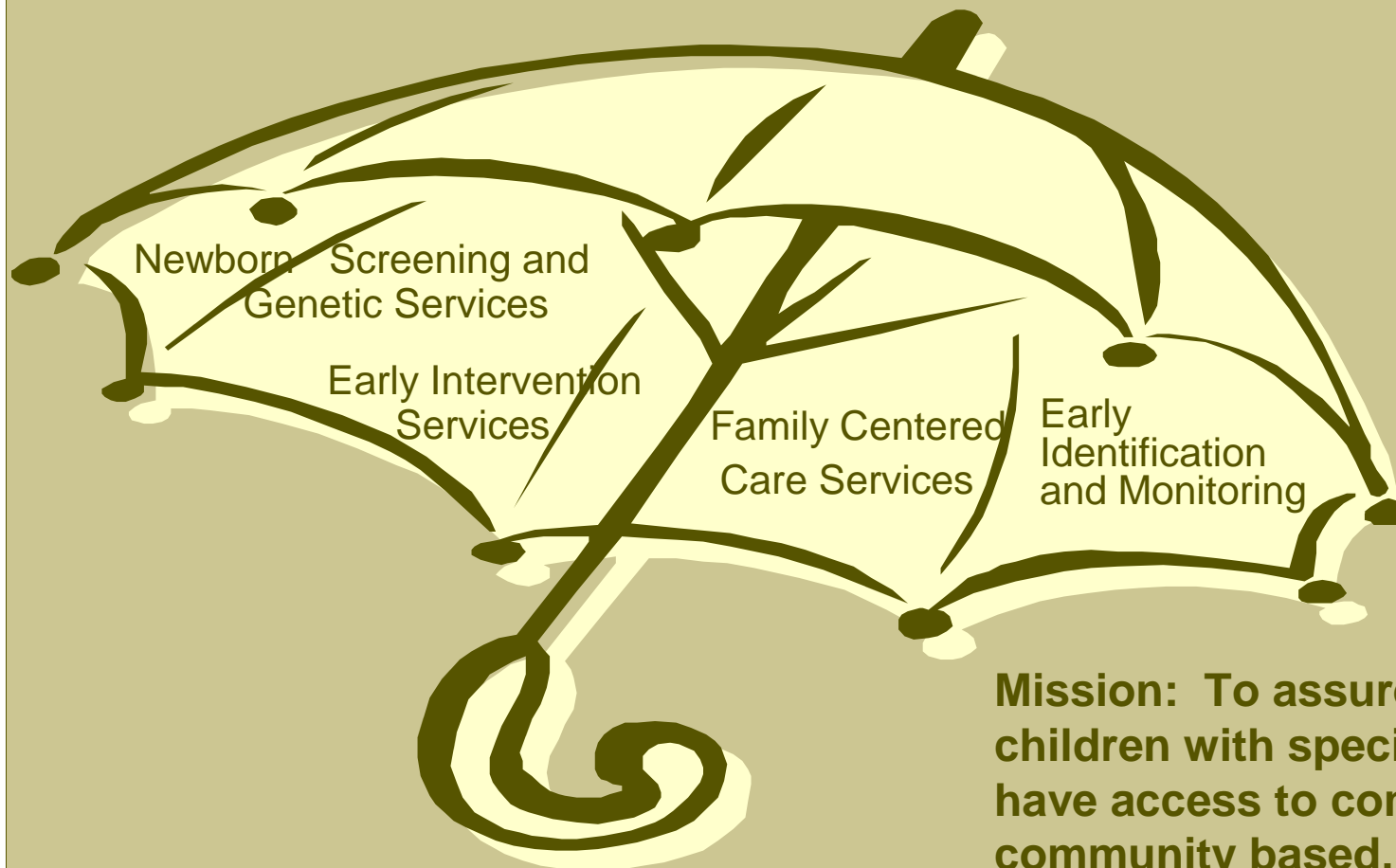


**New Jersey Department of Health and Senior Services,
Special Child Health and Early Intervention Services
<http://www.state.nj.us/health/>**

Special Child Health and Early Intervention Services



Special Child Health and Early Intervention Services



Mission: To assure that all children with special health needs have access to comprehensive, community based, culturally competent, and family centered care.

Special Child Health and Early Intervention Services



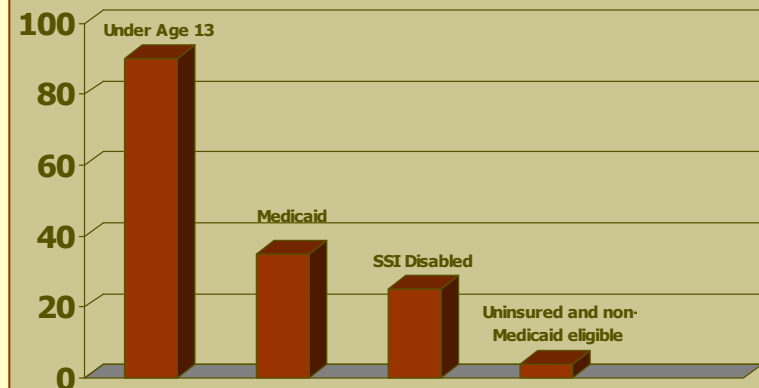
Family Centered Care Services

MISSION

Assist children age birth to 21 years to access comprehensive family centered culturally competent care, and serve as a point of entry for Early Intervention System.

- Case Management
- Child Evaluation Centers/
Tertiary and Cleft Lip/ Palate Services
- Ryan White Part D

Client Statistics



CLIENT STATISTICS:
90% are under age 13 years
35% Medicaid
25% SSI Disabled
4% Uninsured and non-Medicaid eligible

Case Management



Focus – Children with special needs, age birth to age 21 years

- Primary care provider and/or other health and social service providers contacted to coordinate services
- Referrals made for identified needs
- Individual Service Plans developed
- Help families to advocate through various agencies

Programs, Services, and Supports



Information and referral to State, Federal, and charitable programs, examples include

- Early Intervention Services,
- Child Evaluation Centers,
- Family Centered HIV Care Network,
- Catastrophic Illness in Children Relief Fund program,
- NJ FamilyCare,
- Division of Developmental Disabilities,
- Division of Medical Assistance and Health Services Medicaid and/or Waiver programs,
- Social Security,
- SPAN, Elks, Lions, etc....

For More Information



- New Jersey Department of Health and Senior Services, Special Child Health and Early Intervention Services, 609-777-7778, www.state.nj.us/health/fhs/
- New Jersey Department of Human Services, Division of Medical Assistance and Health Services, 609-292-4800, and/or Catastrophic Illness in Children Relief Fund, 1-800-335-FUND, <http://www.state.nj.us/humanservices/>